

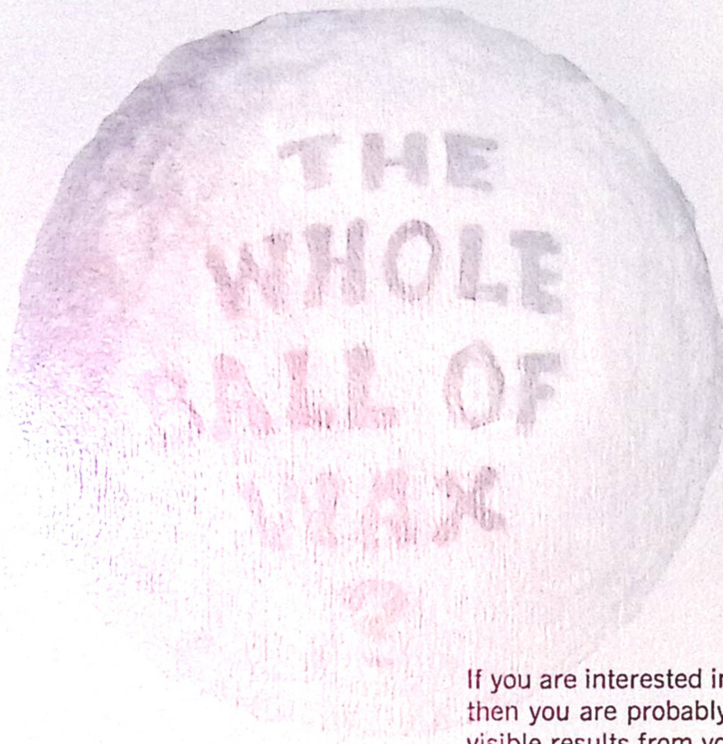
**Are
You
Interested
In...**

**THE
WHOLE
BALL OF
WAX
?**



*As an equal opportunity employer,
Allis-Chalmers offers employment and advancement
on an equal basis
to all qualified persons
regardless of race, creed, color, sex, age,
ancestry or national origin.*

Are You Interested In...



If you are interested in the whole ball of wax then you are probably a self-motivating person who requires visible results from your job.

And if you do — you are the type of individual that Allis-Chalmers seeks. Only those who are bright, inquisitive, ready to accept risks and responsibility and who are committed to excellence will enable Allis-Chalmers to meet our objectives — to grow the way we intend to grow in the marketplaces of the world!

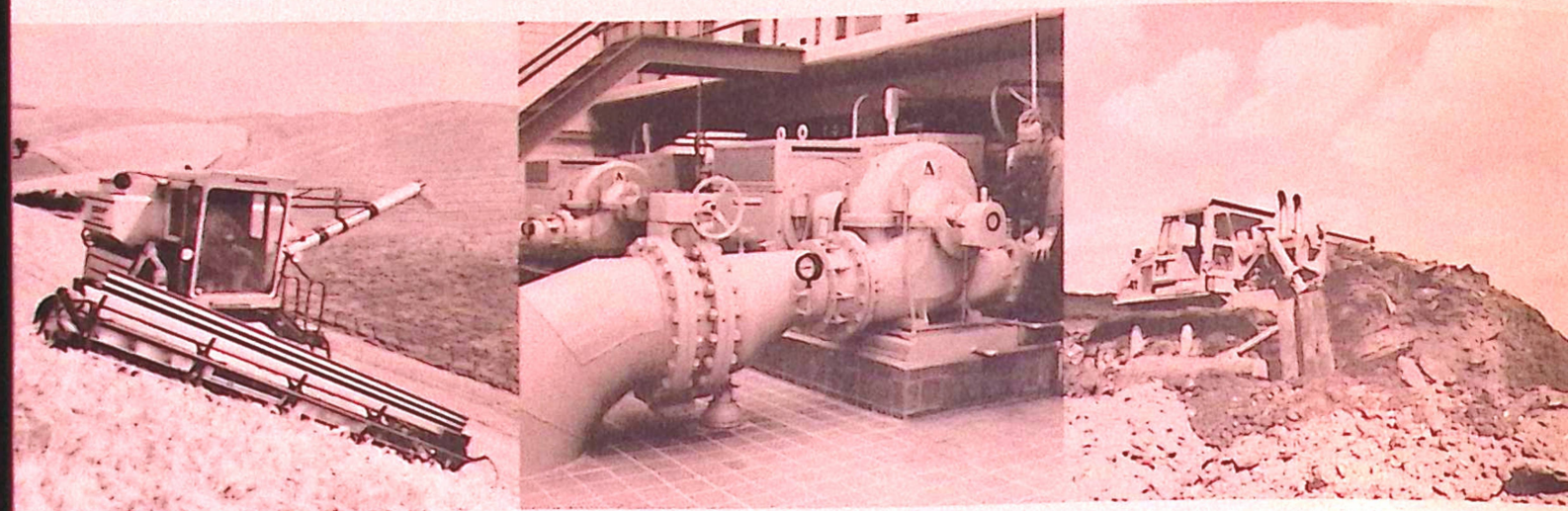
Today, the wide range represented by our hundreds of products requires the constant attention of people who are interested in the whole ball of wax — who are interested in development and research; interested in engineering; interested in management; interested in manufacturing and interested in marketing.

What does this mean to you?

It means a livelier, more challenging place to work with a management philosophy based upon organizational flexibility to successfully manage change.

It means imaginative, new improved products in major lines, and sophisticated, forward-looking research concepts.

If the opportunities described in this brochure turn you on, you can easily arrange an interview ☐



Allis-Chalmers began in 1847, in Milwaukee, Wisconsin, making machinery for flour milling.

Founded by James Decker and Charles S. Seville, the original company — Decker and Seville — was purchased in 1861 by Edward P. Allis and its name changed to Edward P. Allis and Company. He added steam engines to the product line. Later the largest centrifugal pump in America was built by the firm in 1884 and the first triple-expansion pumping engine was designed two years later.

The final emergence of the Allis-Chalmers company in 1901 resulted in the addition of a line of mining and ore-processing machinery. In a move to expand in the electrical field, Allis-Chalmers in 1904 purchased the Bullock Electrical Manufacturing Company of Cincinnati, Ohio. Spectacular lighting at the Saint Louis World's Fair in 1904 was the result of a combination of a Bullock generator and a huge Reynolds-Corliss steam engine.

Allis-Chalmers went further into the electrical field: its first steam turbine-generator was in operation in 1906; by 1926, its hydraulic turbines had established a number of world records.

Allis-Chalmers had still more ideas about power machinery. In 1914, it introduced its first farm

tractor — a machine weighing 4,000 pounds and moving on three wheels. A four-wheel tractor was manufactured in 1920. By 1926, the company had established a Tractor Division with its own sales and distribution system.

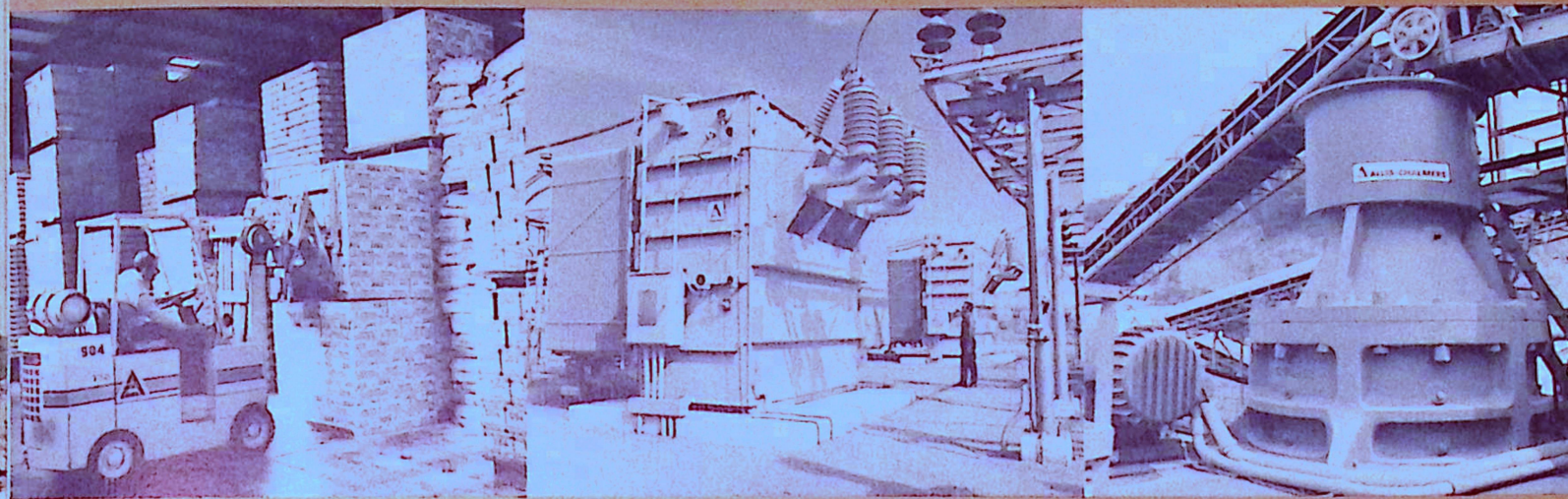
Allis-Chalmers Construction Machinery Division got its beginning in February, 1927, when Allis-Chalmers bought the Monarch Tractor Corporation which became the Springfield Works. This acquisition brought in the 50 and 75 hp tractor models that supplied the base for future crawler and track-type designs which gave Allis-Chalmers its start in the construction machinery equipment business.

Since World War II, the company has strengthened its products in major lines and added new ones.

The Gleaner Harvester Corporation of Independence, Missouri, added in 1955 the well known "Gleaner" line of harvesters. The S. Morgan Smith Company of York, Pennsylvania, became the York plant in 1959, bringing to Allis-Chalmers its line of hydraulic turbines, valves, water handling equipment and other specialized machinery.

Allis-Chalmers helped pioneer a brand new power source: the company, with RCA was selected by Princeton University, to design and build a

an introduction to



facility for advanced research into controlled thermonuclear reactions.

In 1955, Allis-Chalmers purchased the assets of Simplicity Manufacturing Company, Port Washington, Wisconsin, a lawn and garden equipment producer. The wholly-owned subsidiary builds its own brand lines in Port Washington and also operates the Lexington, South Carolina plant, which produces lawn and garden equipment.

Late in 1968, the company acquired the assets of Henry Manufacturing Company, Topeka, Kansas. Now operated as a division of Allis-Chalmers, it manufactures industrial tractor products. And in 1969, Allis-Chalmers completed acquisition of Standard Steel Corporation and its manufacturing facilities in Los Angeles, California, and Decatur, Illinois, where asphalt plants, fish meal plants, small kilns and rotary driers and coolers are manufactured.

Access to continually advancing technology and a broad spectrum of existing and new electrical products and systems for the utility and industrial markets was acquired by Allis-Chalmers in 1970 through licensing agreements with Siemens AG and Transformatoren Union AG, both of West Germany. These agreements gave Allis-Chalmers

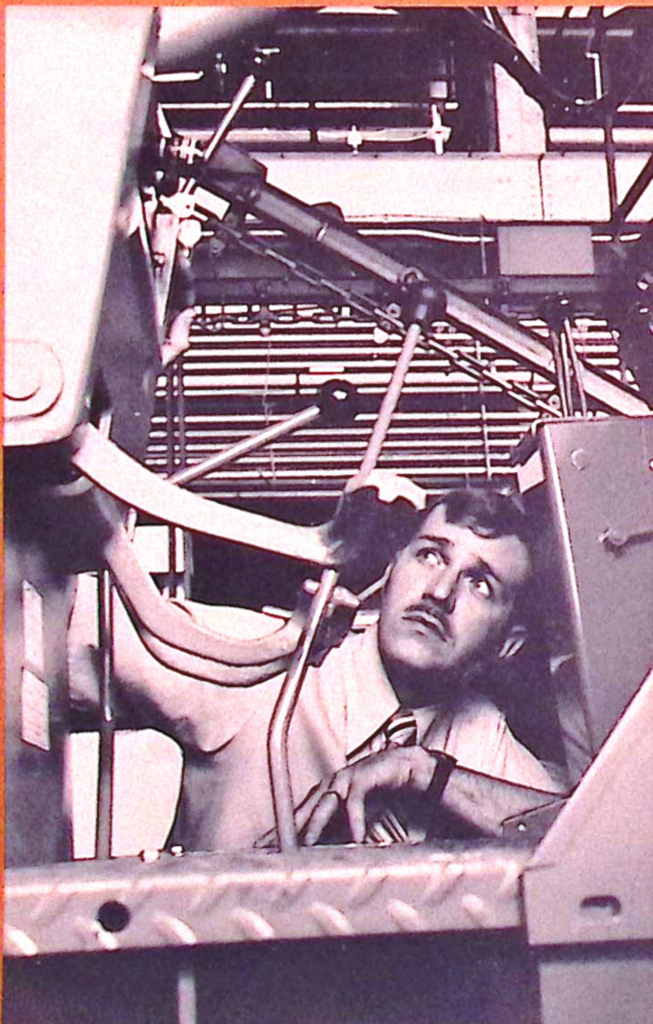
the opportunity to compete in many new areas of electrical products.

In addition, the company and Kraftwerk Union AG of West Germany have formed an affiliate, Allis-Chalmers Power Systems, Inc., to market steam turbine generators for both conventional and nuclear power plants.

Today, Allis-Chalmers is a company of approximately 25,000 employees. The company and its subsidiaries own 29 manufacturing plants in the United States, Australia, Canada, England, France, Italy and Mexico; and in 1971 had sales of \$853 million. It has more than 100 sales offices, branches and warehouses in the principal cities of the free world. More than 5,000 dealers sell and service its products around the world in a broad range of markets such as: agriculture, construction; cement and aggregates; government and defense; electric utilities; petroleum, rubber and chemical; material handling and power equipment; mining and metals; marine products; water and sewage; paper and general industries, and consumer goods.

ALLIS-CHALMERS

THE
WHOLE
BALL
OF WAX AT ALLIS-CHALMERS involves

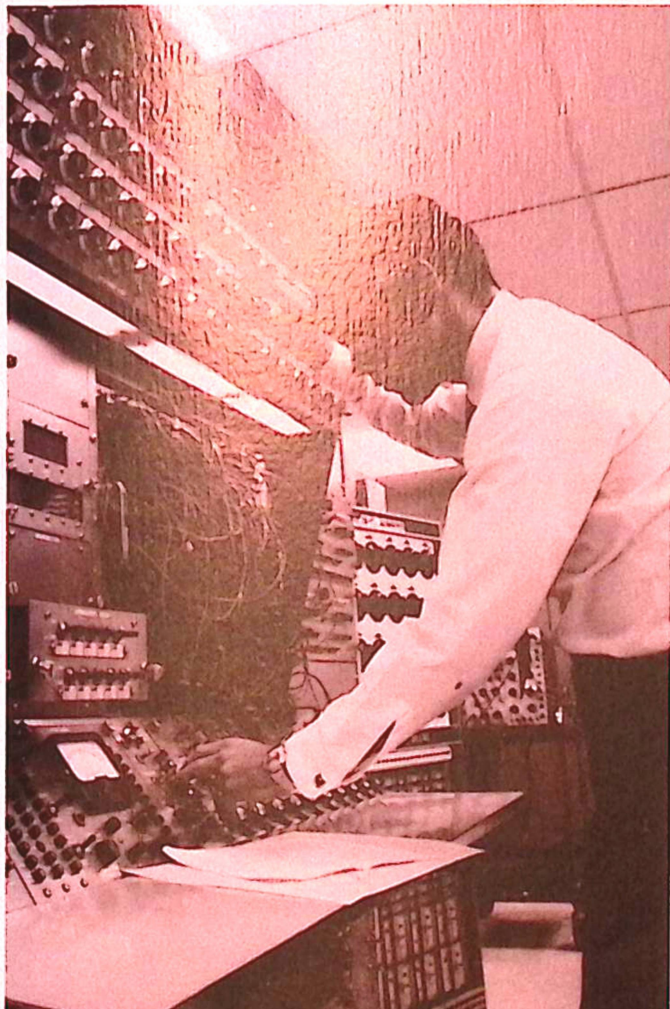


the opportunity for you to make things happen...



by creating
by persuading
by innovating
and by leading.

There is an opportunity for you
at ALLIS-CHALMERS



PRODUCT ENGINEERING ■ DESIGN

As a product engineer, the design and continued improvement of a product would be one of your main concerns. Product engineers work in each plant in redesign groups, modifying existing products as customer requirements change. You would help establish standards, and consult with manufacturing departments concerning test and product problems. You will need creative ability in design and a strong background in engineering fundamentals to perform well as a product engineer.

CONTROLLERSHIP

The diversified functions of controllership include all aspects of industrial accounting, administration, and staff direction at all levels. As a controller, you would be involved in such specialized fields as tax planning and administration, operational auditing, cost accounting, statement preparation and analysis, subsidiary accounting and financial analysis, and controls. Controllership calls for the highest degree of imagination, judgment, initiative, and professional competence.

APPLICATION ENGINEERING

The application engineer provides a strong liaison among product design, manufacture, and field of ultimate use. Based upon customer needs and manufacturing economics, you would design changes into a product that might increase its sales. Sometimes working with a sales representative, you would call on customers, and serve as a technical expert for the field sales engineer. This job calls for the ability to keep up with a rapidly expanding field and to apply this knowledge to suggestions for product improvement.

MANUFACTURING

The opportunities in manufacturing call for technical knowledge, pre-marketing liaison between product and manufacturing engineers, and skillful management of people, materials, and operations. Broad career opportunities lie in the important areas of manufacturing engineering, materials management, quality assurance, plant supervision, and facilities engineering. This diversified field lets you use your skills and knowledge in solving the many complex production problems using creative and economical approaches leading to greater profit for Allis-Chalmers.

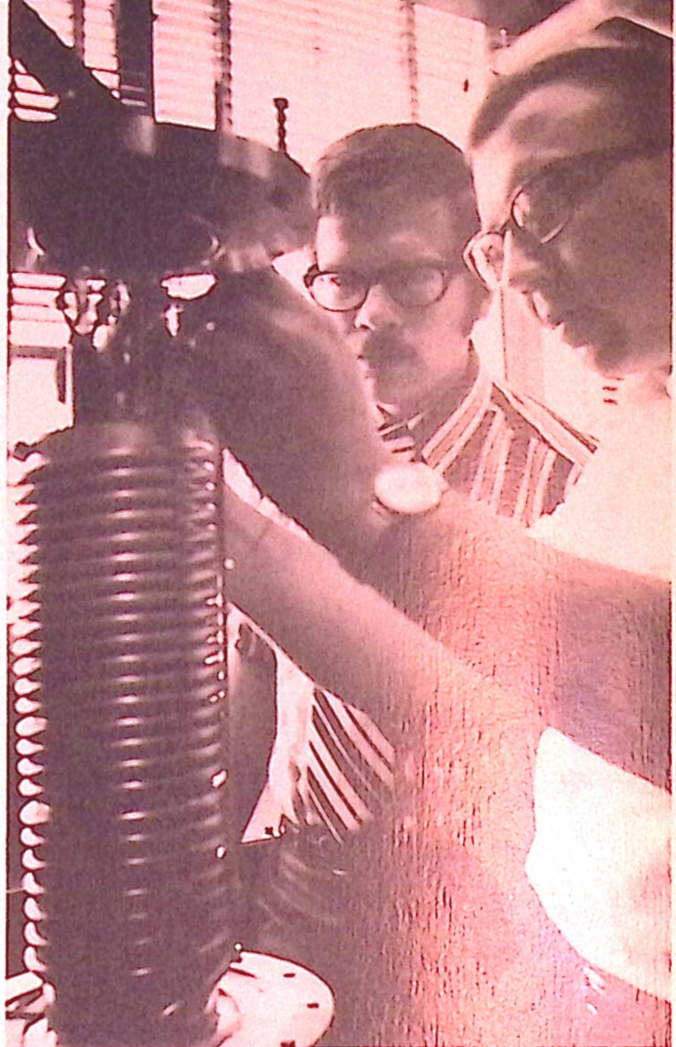
SALES

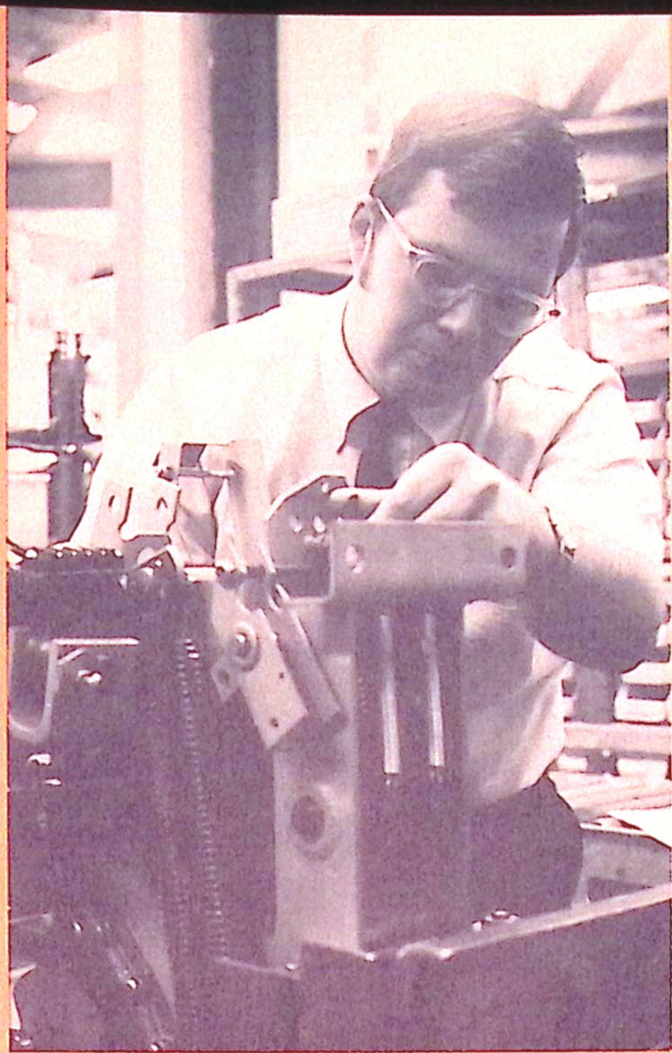
Sales representatives work directly with the customer negotiating sales of our many products. As a sales representative, you would travel, provide product information, do field application work, and assist customers in preparing specifications for bids. You would assist dealers in selling our farm equipment, construction machinery, material handling and engine products. Qualities that would help are the ability to analyze problems and suggest possible solutions, and the ability to communicate meaningfully with technical people inside or outside of our own organization.

OTHER CAREER OPPORTUNITIES

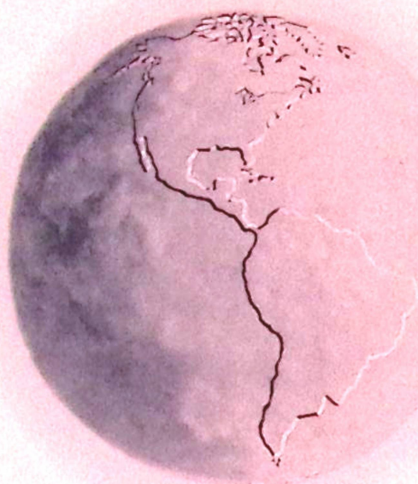
As Allis-Chalmers continues to grow, an increasing number of career opportunities develop in fields such as:

- Development Engineering ■ Service Engineering
- Systems and Data Processing
- Employee Relations ■ Marketing ■ Finance





WHERE YOU MIGHT WORK



Allis-Chalmers has plants situated across the United States, in Canada, Mexico, Australia, Italy, France and England, with offices and representatives in principal cities throughout the world.

Your choice of career objectives will determine the facility at which you will train and work.

Here is a list of some of the Allis-Chalmers divisions, and their locations □

AGRICULTURAL EQUIPMENT GROUP

PRODUCTS:

Tractors; implements; combines; hay and forage tools; corn heads; cotton strippers; manure spreaders; planting systems

PLANTS:

(Tractors) Milwaukee, Wisconsin
(Combines) Independence, Missouri
(Implements) LaPorte, Indiana
(Implements) Oxnard, California

CONSTRUCTION MACHINERY DIVISION

PRODUCTS:

Crawler tractors; wheel and crawler loaders; tractor dozers; motor graders; motor scrapers

PLANTS:

Springfield, Illinois
Deerfield, Illinois

INDUSTRIAL TRACTOR DIVISION

PRODUCTS:

Wheel and crawler tractors and allied equipment for industry, building contractors and municipal use

PLANT:

Topeka, Kansas

ENGINE DIVISION

PRODUCTS:

Engines and diesel-electric systems

PLANT:

Harvey, Illinois

INDUSTRIAL TRUCK DIVISION

PRODUCTS:

Engine and electric powered lift trucks; walkie lift trucks; side loaders; container handlers

PLANT:

Matteson, Illinois
Guelph, Ontario, Canada

SALES AND SERVICES OPERATION

Coordinates the sales of Allis-Chalmers construction machinery products in overseas markets

HEADQUARTERS:

Milwaukee, Wisconsin

WORLDWIDE PARTS DIVISION

SERVICE:

Parts distribution for Construction Machinery Division, Engine Division, Industrial Truck Division and Industrial Tractor Division

HEADQUARTERS:

Carol Stream, Wheaton, Illinois

CRUSHING AND SCREENING EQUIPMENT DIVISION

PRODUCTS:

Gyratory and jaw crushers; vibrating screens; car shakers; portable crushing and screening plants

PLANT:

Appleton, Wisconsin

CEMENT AND MINING SYSTEMS DIVISION

PRODUCTS:

Pyro-processing systems; rock and ore grinding mills; compacting systems; ore pelletizers

PLANT:

Milwaukee, Wisconsin

PAPER MACHINERY DIVISION

PRODUCTS:

Paper machines and auxiliary equipment

PLANT:

Appleton, Wisconsin

REDUCTION SYSTEMS DIVISION

PRODUCTS:

Continuous steel casting equipment

PLANT:

Milwaukee, Wisconsin

NAVAL NUCLEAR COMPONENTS

PRODUCTS:

Containment vessels and other equipment for nuclear power plants

PLANT:

York, Pennsylvania

HYDRO-TURBINE DIVISION

PRODUCTS:

Hydraulic turbines (Francis, propeller, impulse, tube); pump/turbines; valves (penstock, butterfly and spherical); Howell-Bunger (aeration and free discharge); axial flow pumps; water control gates

PLANT:

York, Pennsylvania

HYDROGENERATOR OPERATION

PRODUCT:

Hydrogenerators

PLANT:

Milwaukee, Wisconsin

OVERHEAD DISTRIBUTION TRANSFORMER DIVISION

PRODUCTS:

Power, overhead distribution and instrument transformers

PLANT:

Pittsburgh, Pennsylvania

REGULATOR AND REACTOR UNDERGROUND TRANSFORMER DIVISION

PRODUCTS:

Feeder voltage regulators, URD transformers

PLANT:

Gadsden, Alabama

POWER TRANSFORMER DIVISION

PRODUCTS:

Large and EHV power transformers

PLANT:

Milwaukee, Wisconsin

SALARIES ■ The employee who contributes effectively to Allis-Chalmers profitability can expect increased responsibility and increased compensation. Allis-Chalmers salaries are competitive with those of leading employers throughout the country and vary accordingly to reflect differences in responsibility and performance.

MOVING ■ Allis-Chalmers will establish an arrangement to pay for your transportation expenses and moving your household effects.

EDUCATIONAL ASSISTANCE ■ Allis-Chalmers will reimburse you up to 100% for approved college courses at accredited colleges and universities that relate to your career while a full time employee.

MILITARY SERVICE ■ If you are subject to be called to active duty under Selective Service, ROTC or other military

SOME POLICIES OF INTEREST

obligation, Allis-Chalmers will still consider you for employment. However, if you should be called to duty after beginning work, you will be granted a leave of absence, and there are provisions for differential pay in the case of short term duty for training.

BENEFIT PLANS ■ Allis-Chalmers employees are covered by one of the most comprehensive benefit plans to be found in industry. Among the major benefits available are basic and major medical-hospital-surgical plans, group life insurance, disability income plan, vested retirement benefit, vacations, holidays and an employee savings and investment plan.

Detailed information on Allis-Chalmers benefit plans is available upon request from the Manager of Manpower Development and Training.

ADVANCEMENT ■ At Allis-Chalmers, employment and advancement are based on demonstrated ability and relevant potential. There are no other criteria. Whether your degree is in engineering, business administration, or one of the many other disciplines, a career with Allis-Chalmers offers many opportunities for advancement, possibly in many fields.

If you come to work for Allis-Chalmers, you have opened the first door to a potentially unlimited future. Your abilities can be promptly noticed because you will be faced with challenges from the start. And can look forward to increased responsibilities as soon as you demonstrate aptitude for assuming them.

POWER BREAKER DIVISION

PRODUCTS:
Circuit breakers

PLANT:
Boston, Massachusetts

POWER SWITCHING DIVISION

PRODUCTS:
High voltage switches

PLANT:
Portland, Oregon

STEAM TURBINE GENERATOR OPERATION

Engineering, manufacturing, service and installation of steam turbine generators

PLANT:
Milwaukee, Wisconsin

TURBO-GENERATOR MAINTENANCE SERVICE DIVISION

Installation and repair services for steam turbo-generating equipment

PLANT:
Milwaukee, Wisconsin

UTILITY SALES DIVISION

HEADQUARTERS:
Milwaukee, Wisconsin

MOTOR AND GENERATOR DIVISION

PRODUCTS:
AC and DC multiphase motors and generators from one horsepower up

PLANTS:
Norwood, Ohio
Little Rock, Arkansas
Milwaukee, Wisconsin

INDUSTRIAL CONTROLS DIVISION

PRODUCTS:
Motor controls

PLANT:
Wichita Falls, Texas

SWITCHGEAR DIVISION

PRODUCTS:
Low and high voltage switchgear

PLANT:
Milwaukee, Wisconsin

INDUSTRIAL PUMP DIVISION

PRODUCTS:
Standard centrifugal and turbine pumps

PLANT:
Norwood, Ohio

COMPRESSOR DIVISION

PRODUCTS:
Rotary, centrifugal and axial compressors

PLANT:
Milwaukee, Wisconsin

CUSTOM PUMP OPERATION

PRODUCTS:
Custom pumps

PLANT:
Milwaukee, Wisconsin

VALVE DIVISION

PRODUCTS:
Butterfly and cone (rotary) valves

PLANT:
York, Pennsylvania

ADVANCED TECHNOLOGY CENTER

Electronics and Control Technology;
Materials and Processing Technology;
Engineering and Electric Power Technology;
Overseas Technology Liaison

LOCATION:
Milwaukee, Wisconsin

OFFICE OF GOVERNMENT OPERATIONS

Milwaukee, Wisconsin
Washington, D.C.

MANUFACTURING OPERATION

Custom Machining and Fabricating Department

PLANT:
Milwaukee, Wisconsin

SUBSIDIARIES, PLANTS AND PARTS DEPOTS

ALLIS-CHALMERS CREDIT CORPORATION (SUBSIDIARY)

HEADQUARTERS:
Milwaukee, Wisconsin

ALLIS-CHALMERS FINANCIAL CORPORATION (SUBSIDIARY)

HEADQUARTERS:
Milwaukee, Wisconsin

STANSTEEL CORPORATION (SUBSIDIARY)

PRODUCTS:
Asphalt plants; rotary dryers; kilns; calciners; coolers; cyclone and wet dust collectors; gas scrubbers; exhaust fans; fish meal plants; granulators; pelletizers; crystallizers; sugar cube plants

PLANTS:
Los Angeles, California
Decatur, Illinois

SIMPLICITY MFG. CO. INC. (SUBSIDIARY)

PRODUCTS:
Lawn and garden tractors; powered lawn mowers; snow throwers; rotary tillers

PLANTS:
Port Washington, Wisconsin
Lexington, South Carolina

ALLIS-CHALMERS RUMELY, LTD. (SUBSIDIARY)

PRODUCTS:
Sales outlets in Canada for Agricultural Equipment, Construction Machinery, Industrial Truck and Engine Divisions

ALLIS-CHALMERS AUSTRALIA PTY. LTD.
North Sydney, N.S.W., Australia

PRODUCTS:
Processing machinery and centrifugal pumps

PLANT:
Newcastle, Australia

ALLIS-CHALMERS CANADA, LTD.

PRODUCTS:
Cement making, mining and crushing and screening equipment; pumps and compressors

PLANT:
Lachine, Quebec, Canada

ALLIS-CHALMERS FRANCE, S.A.

Paris, France
PRODUCTS:
Lift trucks; diesel engines; diesel electric systems

PLANT:
Dieppe, France

ALLIS-CHALMERS GREAT BRITAIN, LTD.

Essendine, England
PRODUCTS:
Wheel loaders; vibrating screens; crushers; pumps; compacting systems; kilns and grinding mills
London Sales Office
Allis-Chalmers Great Britain Ltd.
London, England

ALLIS-CHALMERS ITALIANA, S.p.A.

Milan, Italy
PRODUCTS:
Crawler tractors

PLANT:
Milan, Italy

A-C MEXICANA, S.A. (AFFILIATE)

Mexico 1, Mexico
PRODUCTS:
Lift trucks; motor graders and grinding, crushing and screening equipment; processing machinery
PLANT:
San Luis Potosi, S.L.P., Mexico

ALLIS-CHALMERS OVERSEAS, S.p.A.

Rome, Italy

ALLIS-CHALMERS DO BRASIL INDUSTRIA COMERCIO LTDA

Parts Distribution Center

Sao Paulo, Brazil

ALLIS-CHALMERS

Parts and Service Center — Europe
Liege, Belgium

ALLIS-CHALMERS

Parts Distribution and Training Center
Jurong, Singapore

* * *

ALLIS-CHALMERS POWER SYSTEMS, INCORPORATED

(A jointly owned company with Kraftwerk Union of West Germany)

PRODUCTS:
Steam turbine generator units

HEADQUARTERS:
Milwaukee, Wisconsin

Are
You
Interested
In...

THE
WHOLE
BALL OF
WAX
?

How do you feel right now?

A little confused, bewildered, perhaps? No wonder. You are faced with just about the most important decision you've ever had to make.

How does the Allis-Chalmers "ball of wax" shape up for you?

This booklet and your interviews with us will help us both decide. To help you make your decision, you will want full and frank answers to questions like these:

- Is the company aggressively pursuing new opportunities?
- How successfully does the company manage change?
- Does it serve growth markets?
- Does its management value new talent and ability?
- Can I expect a variety of careers within the company?

The vibrant young people who have joined Allis-Chalmers in recent years found favorable answers to these questions.

If what you have heard about Allis-Chalmers and what you have read in this booklet make us sound like the sort of company where you can best fulfill your individual career goals, talk to your college placement officer today.

Or write: **MANAGER** ■ Manpower Development and Training
Allis-Chalmers Corporation
Milwaukee, Wisconsin 53201



manpower development and training
ALLIS-CHALMERS CORPORATION
milwaukee, wisconsin 53201

